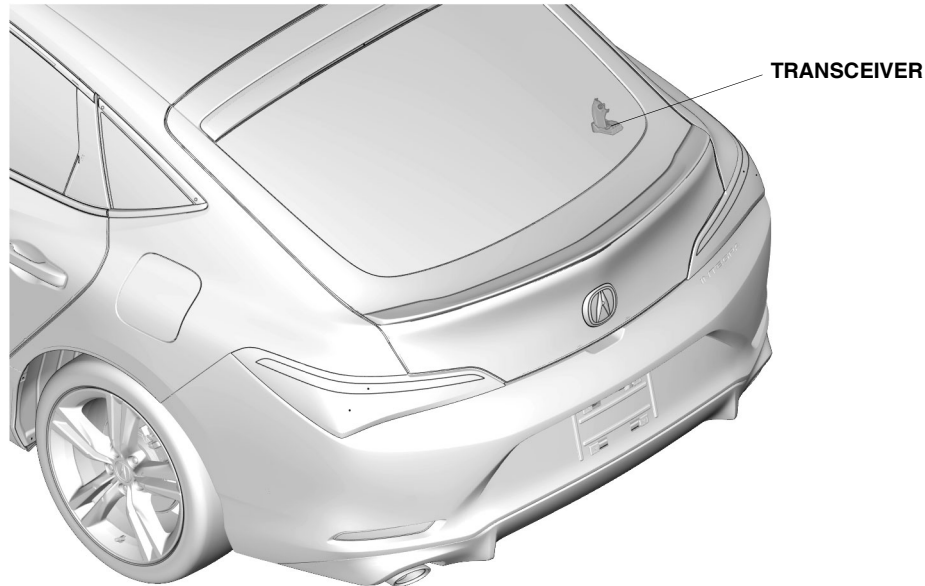




# INSTALLATION INSTRUCTIONS

<b>Accessory</b>  REMOTE ENGINE STARTER	<b>Application</b>  2023 INTEGRA MODEL SERIES	<b>Publications No.</b> <b>VERSION 1</b>
		<b>Issue Date</b> <b>MAY 2022</b>

## GENERAL VIEW



QL60701AT

## FOR YOUR SAFETY (Read carefully.)

### Warning Symbols

**Safety:** Your safety, and the safety of others, is important. To help you make informed decisions about service procedures, we have provided safety messages where appropriate. Of course, it is not practical or possible to warn you about all the hazards associated with servicing a vehicle - you must use your own good judgment.

You will find important safety messages preceded by one of following symbols:

\*All symbols are not used in all installation instructions.

**⚠ DANGER**

You will be killed or seriously hurt if you do not follow the instructions.

**⚠ WARNING**

You can be killed or seriously hurt if you do not follow the instructions.

**⚠ CAUTION**

You can be hurt if you do not follow the instructions.

**NOTICE**

Gives advice to prevent damage to the product, vehicle, the environment or other property.

**NOTE**

Gives helpful information or instructions to be followed when installing this product.

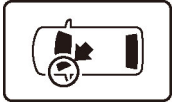


Indicates a prohibited action.

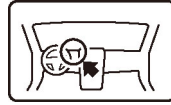
## Procedure and Location Icons

These icons indicate the work location and the worker's point of view.

\*All icons are not used in all installation instructions.



The location on the vehicle.



The location in the vehicle.  
(instrument panel.)



Wear eye protection.



Wear heavy gloves.



Use an assistant.



Place the part on a blanket.



Work perpendicular.



Remove any burrs.



Use touch-up paint and allow to dry.



Tighten to the specified torque.



Apply firm pressure while rolling, especially at the ends, to set the adhesive.



Press firmly.

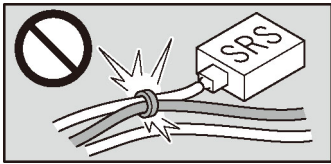


Clean with isopropyl alcohol.

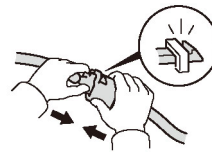


Return the original part to the client.  
(Do not reuse.)

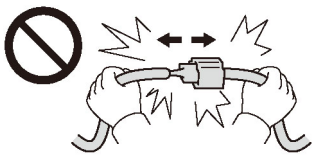
## Wire Harness Routing Precaution



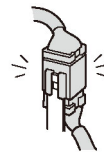
Do not secure the accessory harness to the SRS harness.  
(except for instruction cases.)



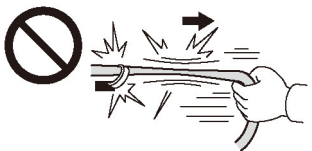
Push the connectors and terminals together until they lock.



Do not pull the harness to unplug the connectors.



Install removed connectors in their original location.



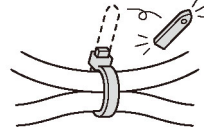
Do not pull the harness.



Secure the accessory harness as shown.



Do not pinch the harness.



Cut off the excess wire tie.

## Safety: General

- Observe all safety notes and precautions described in the service information, in addition to those described in this Installation Instruction. Be extremely careful for your safety and the safety of others.
- Be careful not to damage the vehicle or the parts.
- Be extremely careful when handling retaining tabs and clips.
- Note the locations of the parts before removing them so they can be properly installed in their original positions.
- The illustrations may differ slightly from the actual accessory.

## Safety: Electric Parts

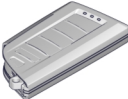
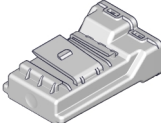

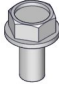
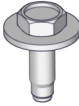
Always disconnect the negative cable from the battery before beginning work.

## Safety: Accessory

Always use the parts and tools specified in the installation instructions.

## PARTS LIST

Remote Engine Starter Kit (P/N 08E92-3S5-200)

Remote	Transceiver	Bracket	Bolt A
			
Bolts B (2)			
			

## REQUIRED TOOLS AND SUPPLIES

- Ratchet
- 10 mm Socket
- 10 mm Open end wrench

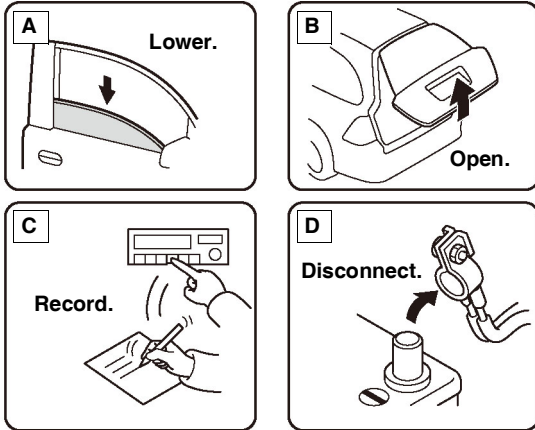
- Flat-tip screwdriver
- Masking tape
- Scissors
- Phillips screwdriver

The following tools are available through the Acura Tool and Equipment Program:

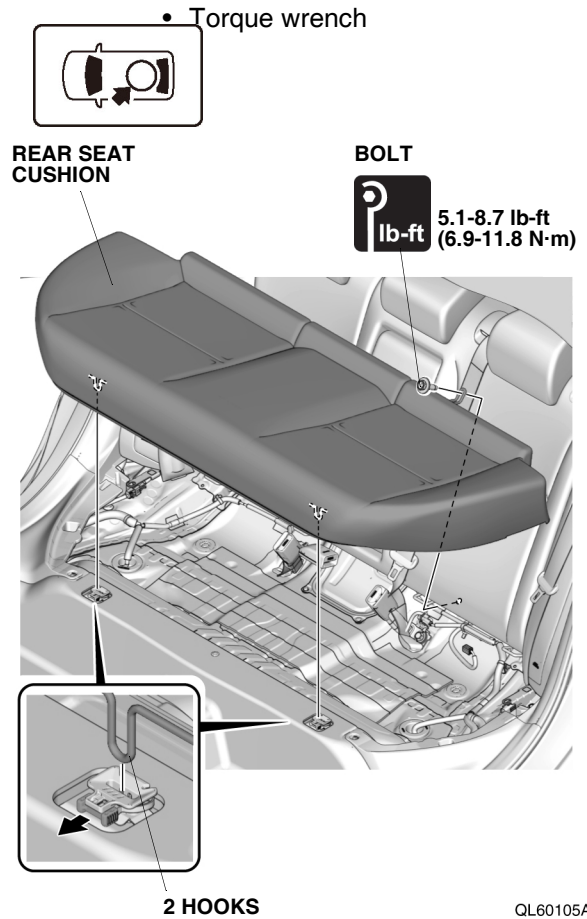
- Trim Tool Set (T/N SOJATP2014)
- Plastic Trim Tool (T/N SILTRIMTL10)

## INSTALLATION

1. Disconnect the negative cable from the battery.



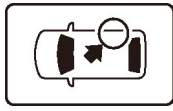
2. Release the rear seat cushion.



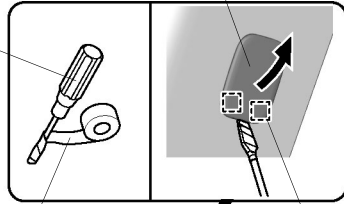
3. Remove the right rear side airbag.

### NOTICE

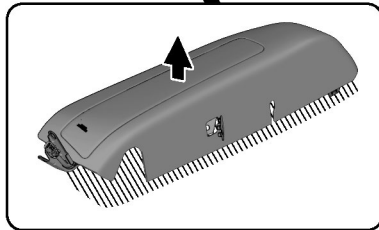
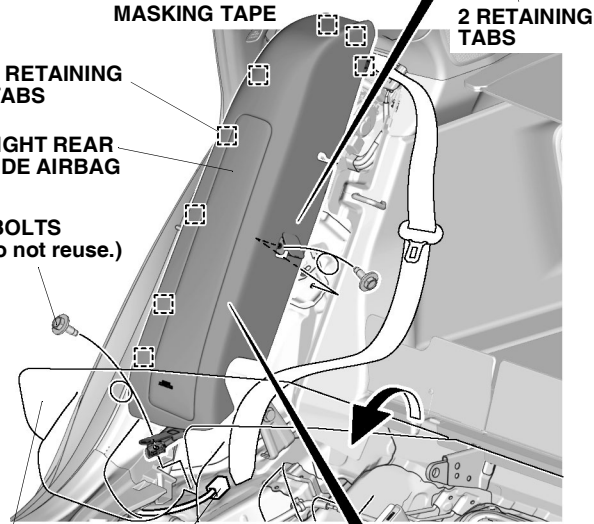
- Do not drop the removed right rear airbag or hit it on an object.
- Place the removed right rear airbag in a safe place with the pad surface (top) facing upward.



FLAT-TIP SCREWDRIVER



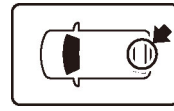
CAP



VEHICLE CONNECTOR

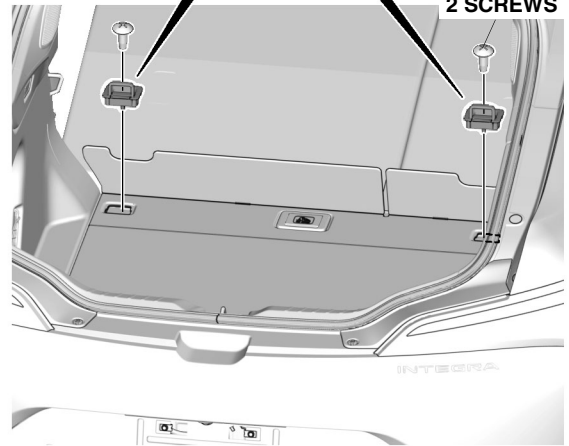
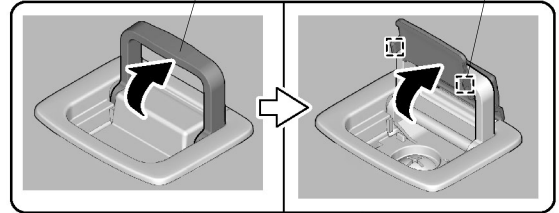
QL60805BU

4. Remove the tie-down hooks.



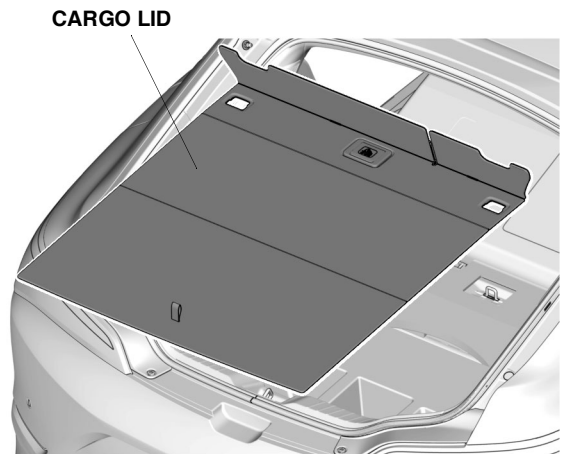
2 TIE-DOWN HOOKS

2 RETAINING TABS



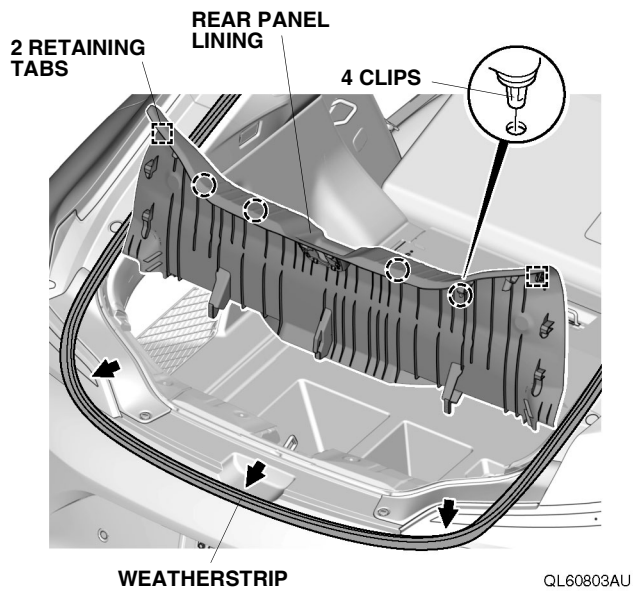
QL60801AU

5. Remove the cargo lid.

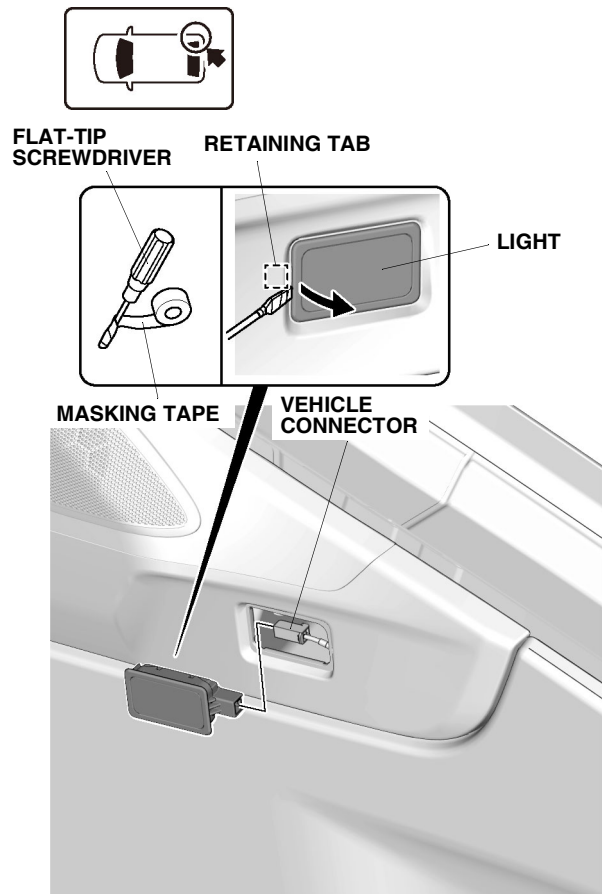


QL60802AU

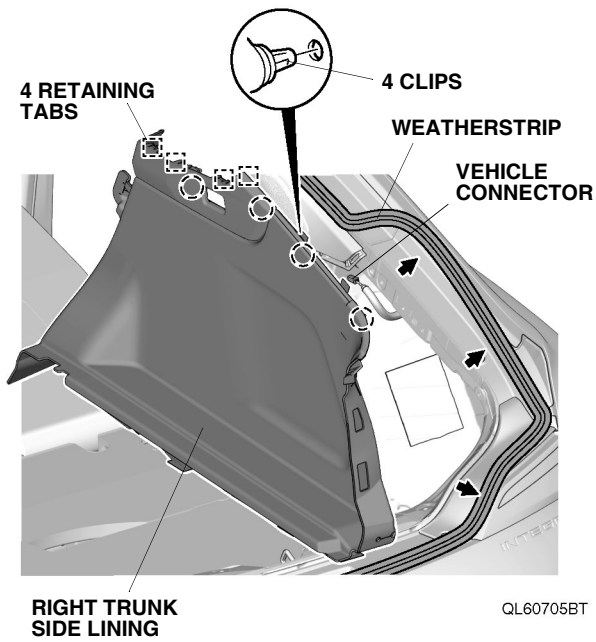
6. Remove the rear panel lining.



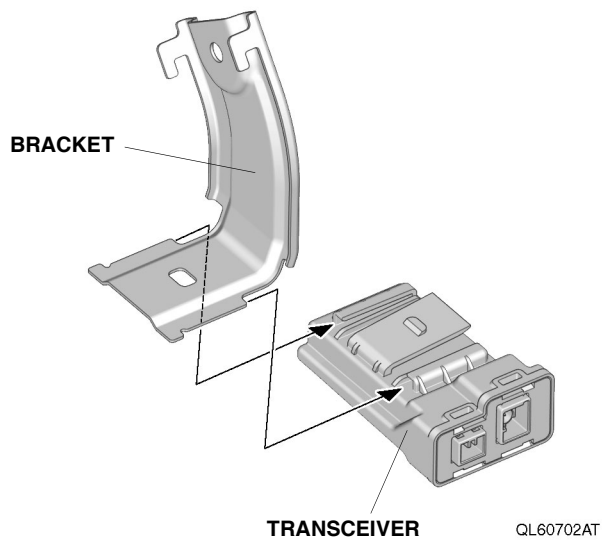
7. Remove the light.



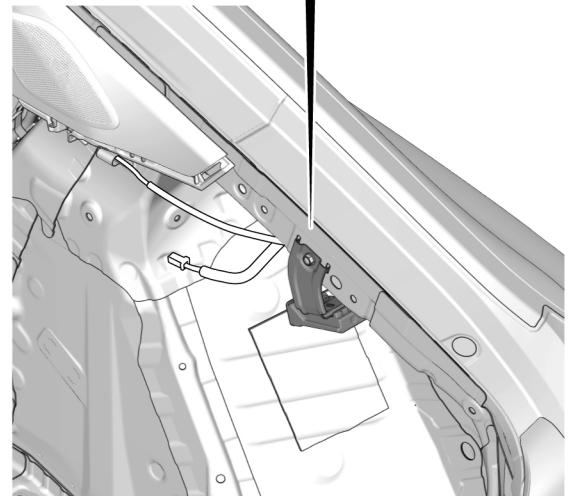
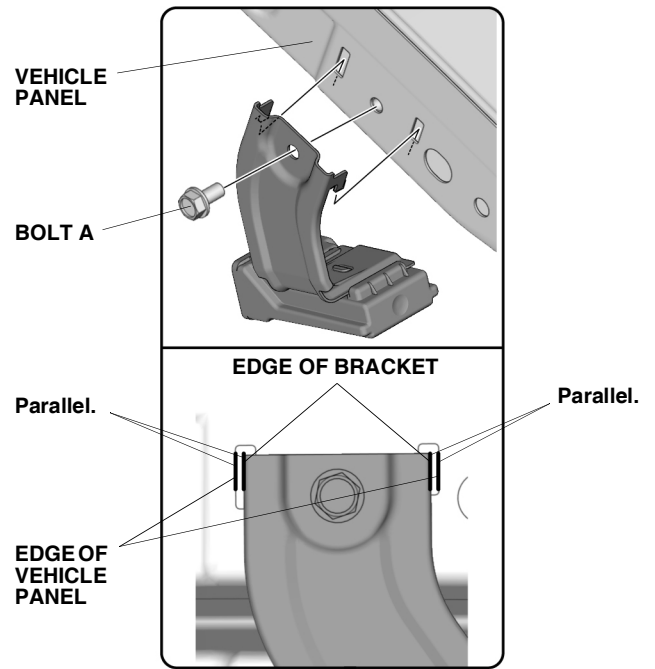
8. Remove the right trunk side lining.



9. Install the bracket.



10. Install the transceiver.

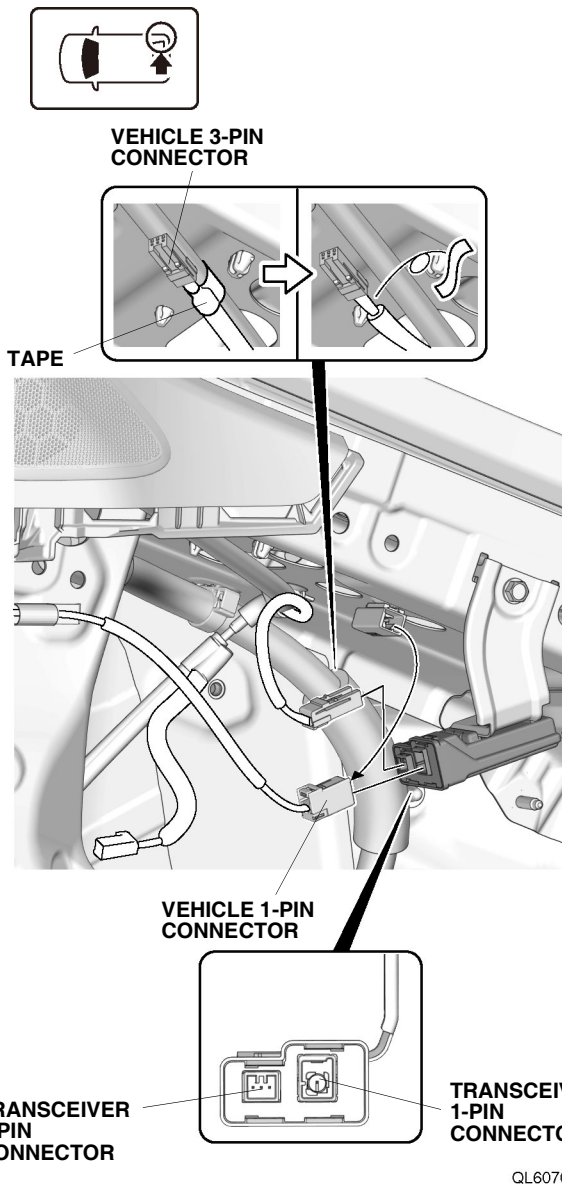


11. Plug the vehicle connectors.

**NOTICE**

Be careful not to damage the vehicle harness.





12. Check that all parts are installed and properly routed.

**NOTE**

- Check that all harnesses are not pulled or pinched.
- Make sure all clips and wire ties are securely installed.

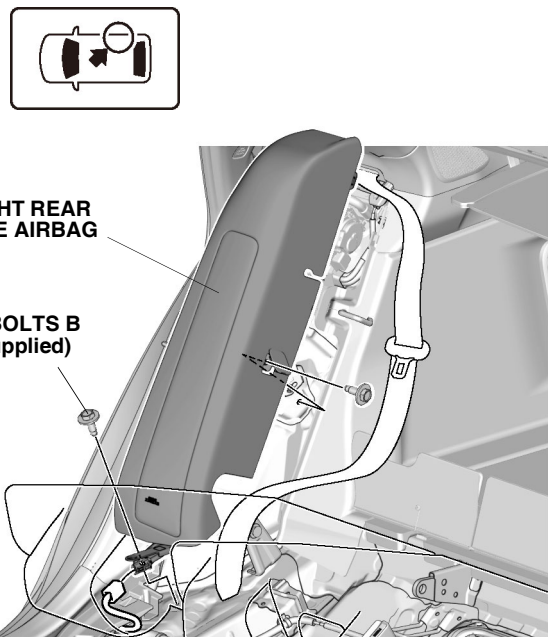
13. Install all removed parts.

<Installing the Right Rear Side Airbag>

14. Install the right rear side airbag.

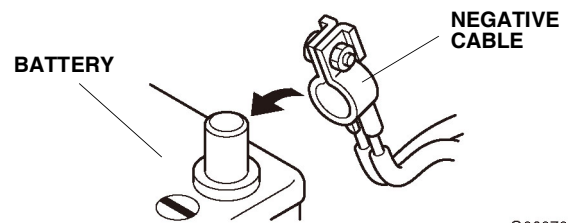
**NOTE**

Make sure to use the replacement bolt provided in this kit.



QL60706BT

15. Connect the negative cable to the battery.



Q060702BM

16. Turn the engine switch to ON; the SRS indicator should come on for about 6 seconds and then go off.
17. Make sure the accessory operates as described in the vehicle owner's manual.
18. Make sure all accessories and systems operate properly.
19. If necessary, restore the systems back to normal operation as described in the service information.
20. Press and hold the audio unit power button for 2 seconds to restore the audio and navi (if equipped) system functions.

## Engine Remote Start System Registration

1. Connect the i-HDS to the data link connector.
2. Load the Honda Diagnostic System Software, select **Immobilizer Setup Tool**.



3. From the **Registration Menu**, select **KEYLESS ACCESS Remotes**, then select **2-WAY KEYLESS SETUP**. Change the setting to **2-WAY KEYLESS mode**. Get the PCM code either through manual mode or automatically through immobilizer code inquiry. Use the original remote, not the remote starter remote, and make sure the remote starter remote is away from the vehicle.
4. Go back to **KEYLESS ACCESS Remotes**, select Add a **KEYLESS ACCESS Remote**, and follow the instructions on the i-HDS screen. Do not bring the remote starter remote into the vehicle until the i-HDS asks for the new remote.
5. After registration, verify all remote-related systems work normally with all remotes.

## Remote Engine Start

1. Press Lock, then press and hold ENGINE. The amber LED blinks, and the green LED stays on for 1 second when the engine starts. You can repeat this once at any time within 10 minutes of the initial remote start for a 10-minute extension.
2. While remote engine start is on, the following applies:
  - The climate control system can warm or cool the interior, depending on the ambient temperature.
  - The security system remains on.
  - Exterior lights and accessories remain off.
3. To start driving after you enter the vehicle, press the brake pedal and press the ENGINE/START/STOP button.

## Stopping the Engine

1. Press and hold ENGINE. The red LED stays on for 1 second.  
**NOTE:** The engine will stop if it has been running for more than 10 minutes or any door is opened without using the remote or keyless access.