

# Integra Type S – Digital Cluster Lens Replacement

This quick guide is intended to help anyone replace the FL5/DE5 digital cluster gauge plastic LENS. Have you mistakenly scratched up or added hideous swirls on your cluster gauge lens as I have? Please follow along below

## Tools:

Phillips head screwdriver.  
Flat head screwdriver  
Plastic trim prying tools  
Flashlight

## Materials:

Digital cluster Lens Part #: **78156-T20-A01** (\$13.95)  
PPF/Ceramic coating for new lens

If you don't intend to replace your lens but would rather perform a repair. Meguairs PlastX compound should be able to remove most scratches/swirls. I did not want to deal with the haze glare so I bought replacements.

**Starting Condition:** Begin by prying loose the center trim with the climate control buttons. The right side of the same trim does not need to be removed.



**Step 1:** Remove only the left side of the **center trim**.. Using your car trim prying tools, gently de-latch two of these clips denoted by the green arrow. Then grab the entire trim with both hand and pull apart with some moderate force. The whole center trim assembly should come right off.



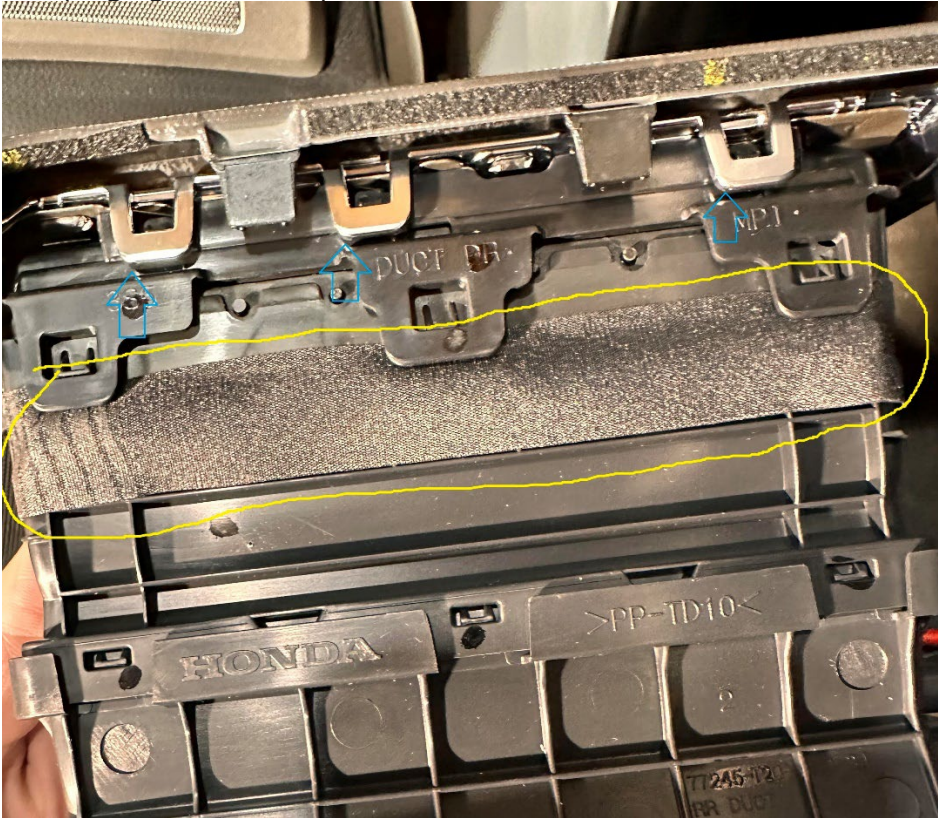
**Step 2:** Pry apart the driver side ventilation trim. De-latch the clips at all the green arrows. Note the yellow oval circle, this will need to be pulled down to remove the digital gauge cluster bezel.



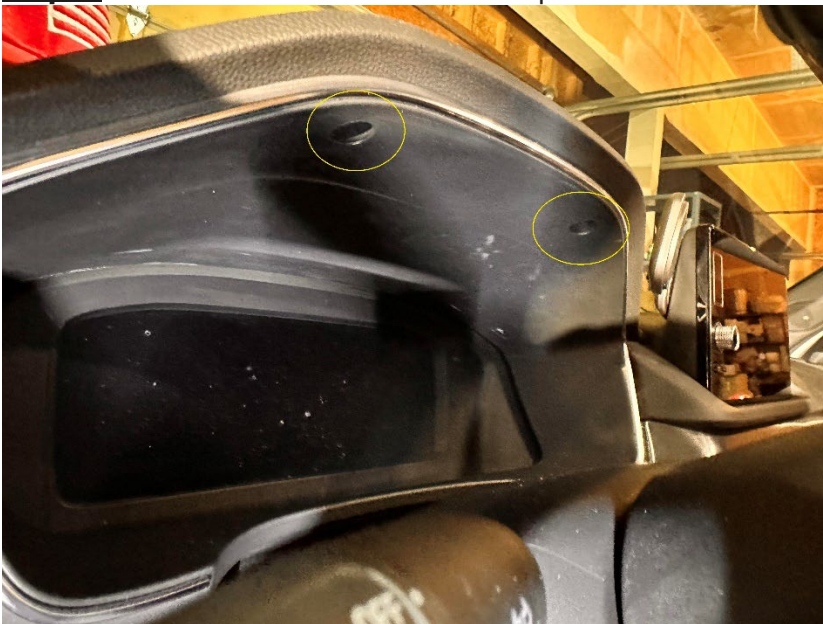
**Step 3:** There is an interior clip here that will need to be de-latched.



**Step 4:** be careful not to break the tabs noted from the blue arrows. If these break the entire vent will move around and rattle. I've also added some insulating tape to help eliminate rattles from plastic bumping against other plastic



**Step 5:** Remove two screws with a Phillips screwdriver to detach the **gauge cluster bezel**



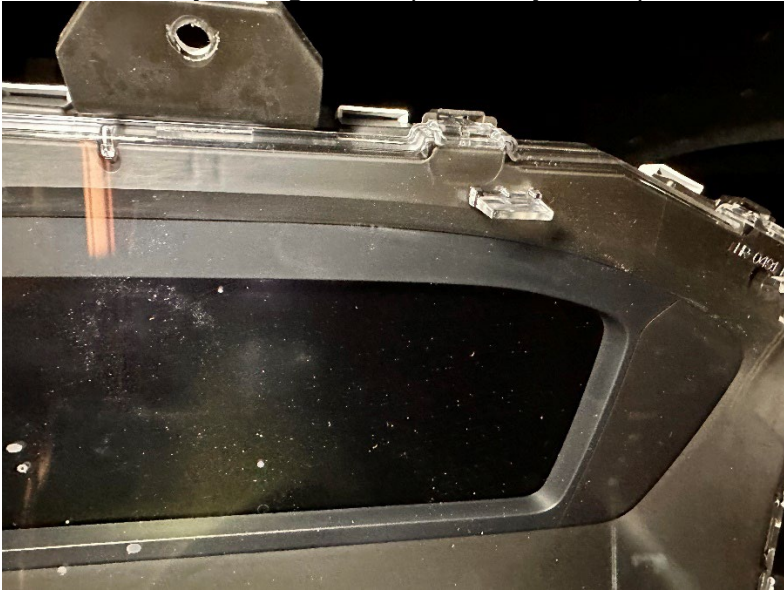
**Step 7:** Remove the additional **plastic cover** that seats over the steering wheel. This will need to be removed with the **gauge cluster bezel**. There is a **soft black cloth** that connects them. Do not damage or rip apart.



**Step 8:** Remove three screws in the yellow circles with Phillips screwdriver. Using your fingers or a flathead screwdriver, press down and pull apart all the tabs at the green arrows.



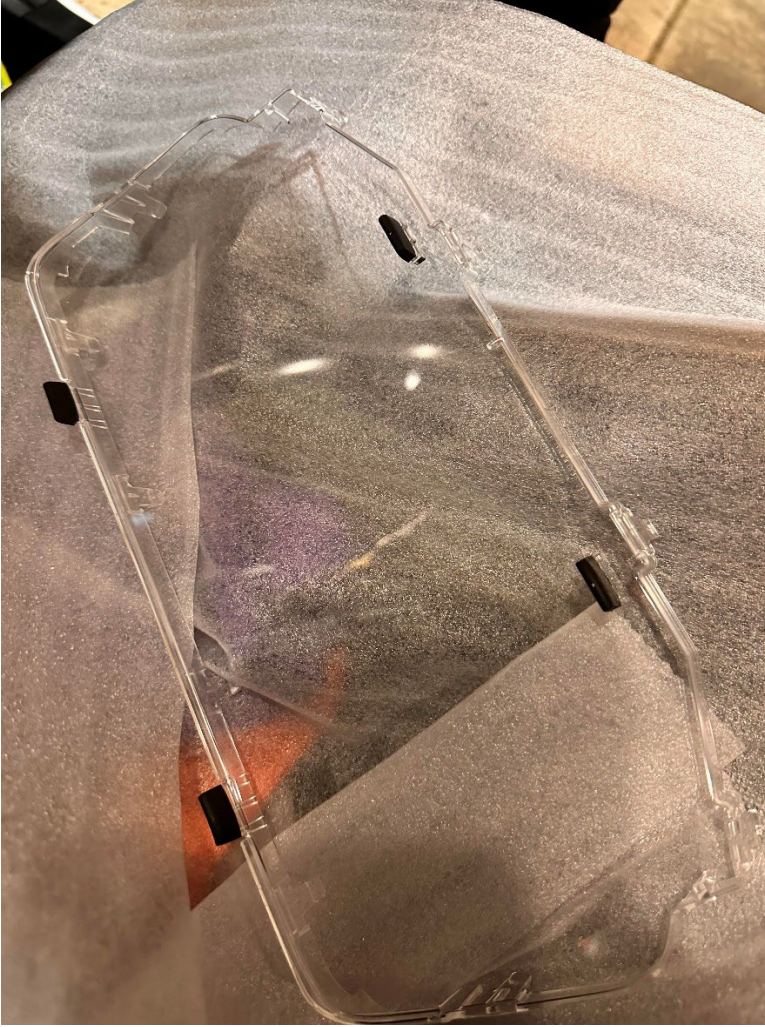
**Step9:** Once all retaining tabs are loosened, DO NOT completely pull apart yet. Get the replacement lens ready for immediate installation as to not allow dust particles to get inside. I had my toddler hold a vacuum nearby during this step for stray dust specs floating around.



**Step 10 [Optional]:** The new lens has brand new PPF already installed. I added ceramic cover over it a day prior. This step is optional. I did this to freely wipe down the new lens in the future without worrying about scratching it.



**Step 11:** Transfer the **four rubber pieces** from the old lens onto your new lens. These help seat the **bezel** and prevent rattling while daily driving.



**Step 12:** Pull apart the old lens and fasten the new lens onto the **digital gauge cluster**. The eight tabs snap in fairly easily.

**Step 13:** Mount everything back into place in the reverse order. Tighten all Phillips head screws previously removed. Then snap all the plastic trims into place. Check for any gaps.

**Complete:** New digital gauge cluster lens in place and as good as new

