

Integra Type S – 5 Seat Conversion Guide

This quick guide is intended to help anyone do the Acura Integra Type S rear seat conversion that will comfortably seat three. Please note the door jamb load rating is 680lbs., it would be a good idea to get a written acceptance from your insurance company that you'll be covered. Please follow along below

Tools:

Socket sizes 10mm, 12mm and 14mm.

Ratchet

wrench Extension (the job will go by much quicker)

Philips head screwdriver

Flat head screwdriver

Flashlight

Materials:

Complete set of rear seats out of a 5 door integra base/Aspec (civic will work with some modifications)

Seat Assembly:

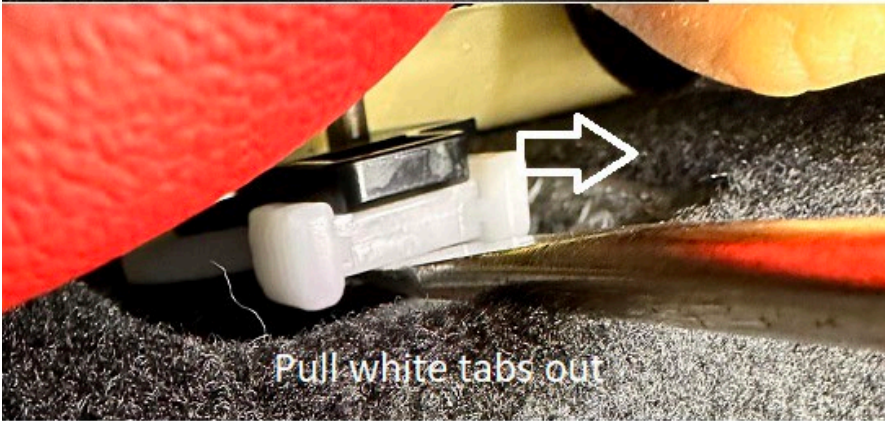
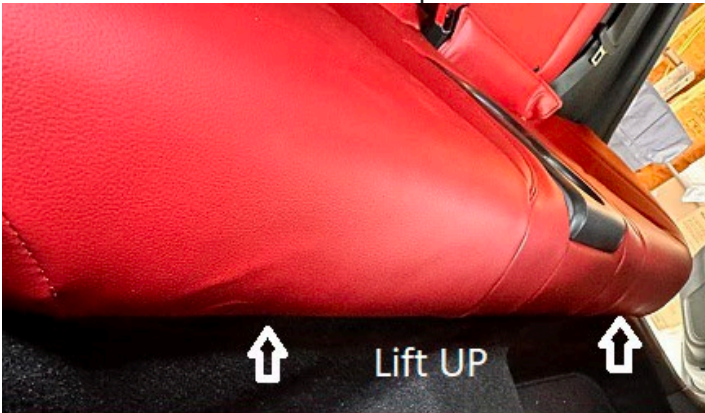
1. 60% Seat
2. 40% Seat
3. Seat bench
4. Double center seat belt buckle (Part 82455T49 – A010M2JY9 – 23219 – 3J9Q)

Parts costs me about \$670 total. Please note that if you decide to buy the OEM parts and assemble yourself you do not need to buy them all. Most of the Type S seat components can be reused, and built into the five seater.

Here are the OEM seats:



Step 1: Remove **seat bench assembly**. Lift the entire seat bench up to find two small white tabs on both sides to release from the U shape brackets:



Step 2: De-latch the **60% seats** and lower half way. Peel back the velcrow leather covers to reveal the bolt. Using a **10mm socket** remove the retaining bolt.



Step 3: Using the **14mm socket**, remove the bolt attacking the **rear-right center seat belt buckle** attached to the frame. At this time, detach the seatbelt censor wire connectors.

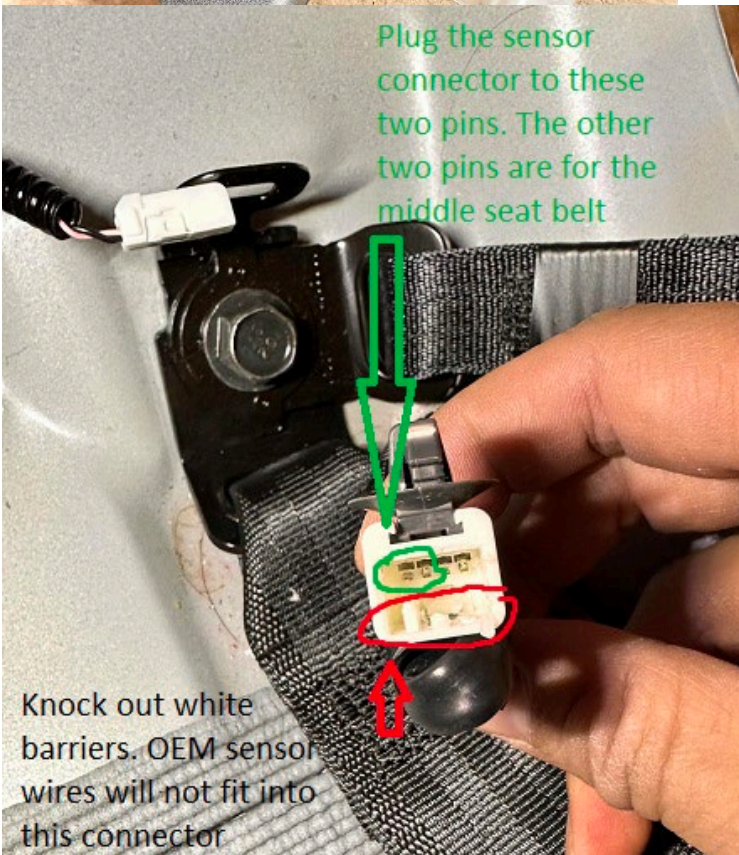


Step 4: Next, get the **center double rear seatbelt buckle** (Part 82455T49 A010M2JY9) and attach it to the frame. The new wire connectors will have four pins (Type S only has two pins). You will need to knock out some of the white barriers with a razor blade. Then attach the 2 pin connector to the RIGHT side of the new center double rear seatbelt buckle:



New center double rear seatbelt buckle

Old center single seatbelt buckle



Plug the sensor connector to these two pins. The other two pins are for the middle seat belt

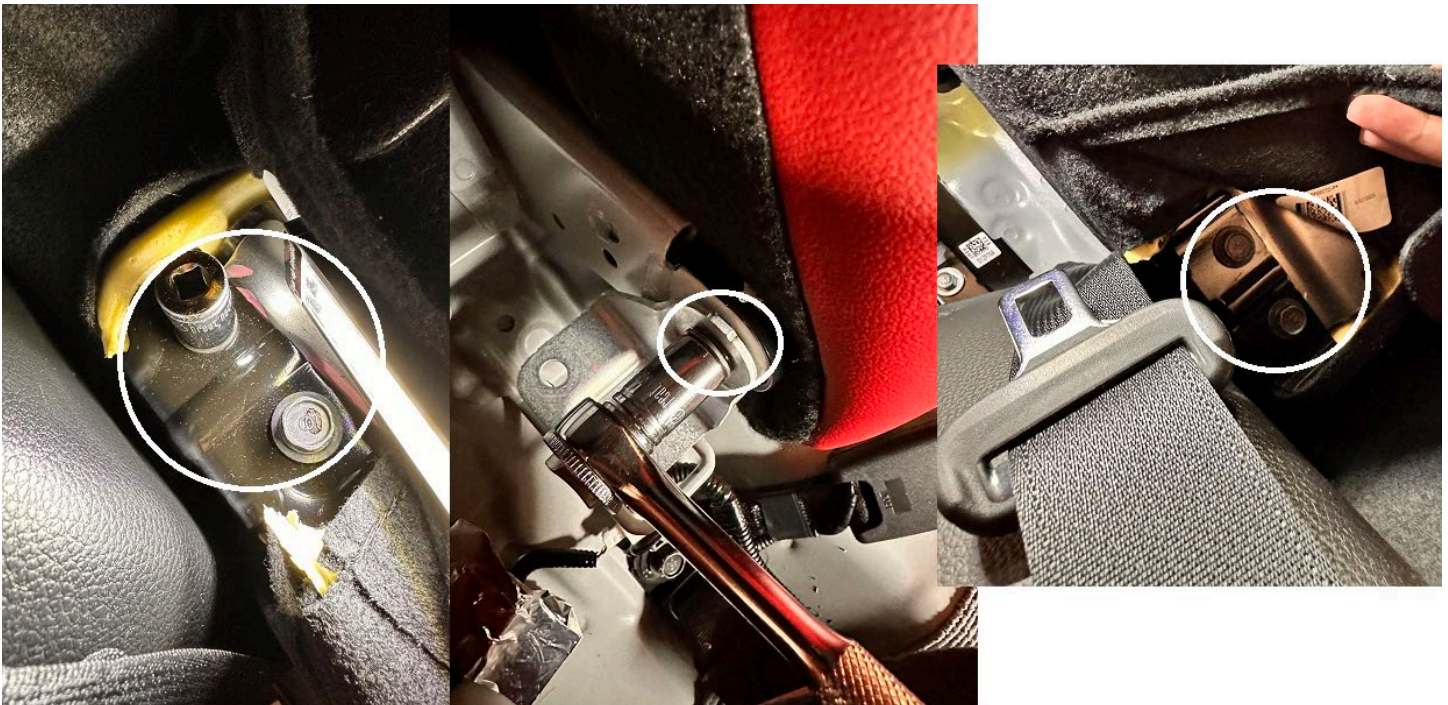
Knock out white barriers. OEM sensor wires will not fit into this connector

Note: Turn car on with seatbelt attached to the buckle to verify you've selected the correct pins

Step 5: Mount the new center double rear seatbelt buckle to the frame using 14mm socket and bolt.

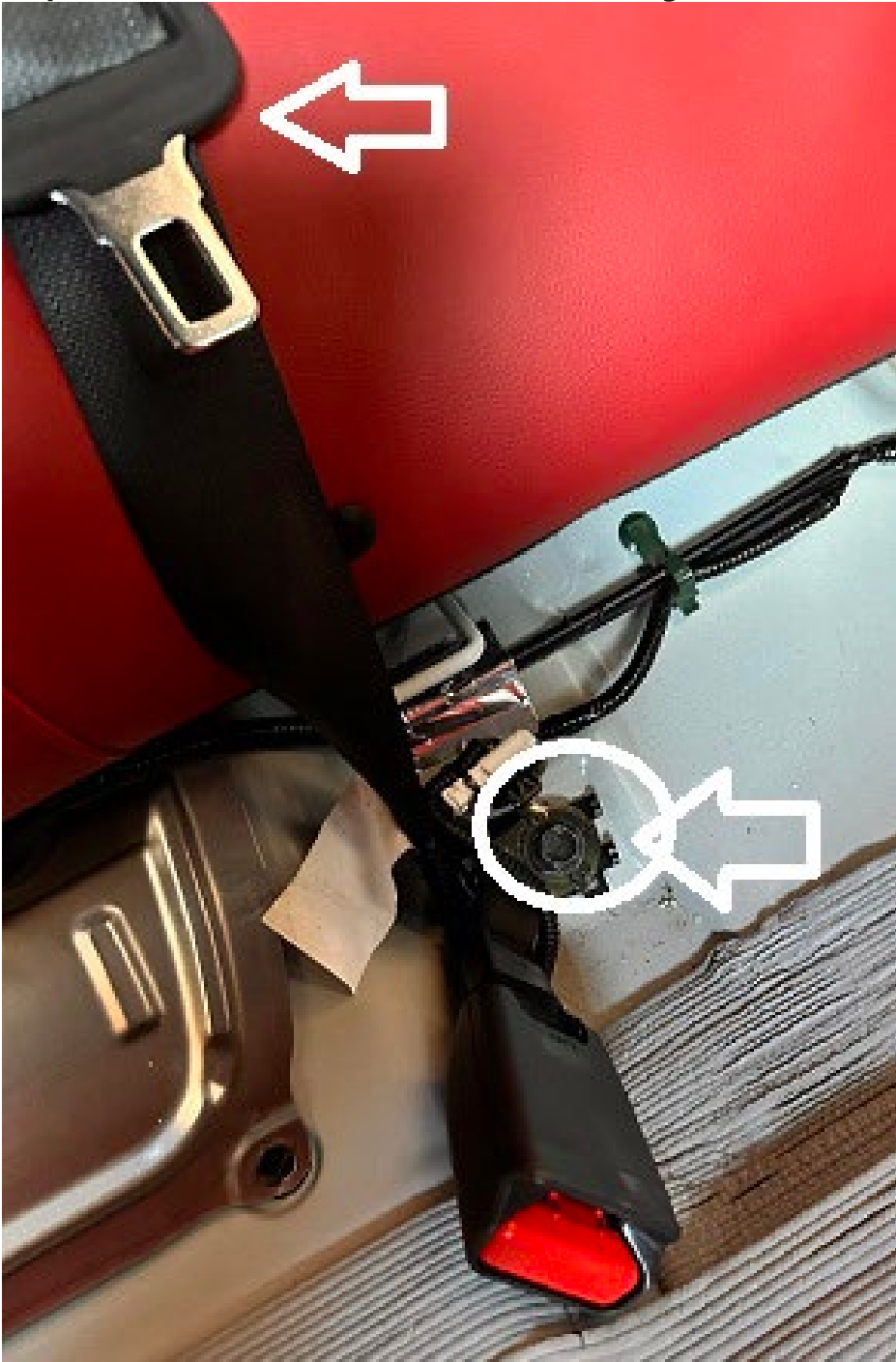


Step 6: Now fold down **the 60% seats** and remove the bolts on both sides. Then remove bolts for the **40% seats**:



Step 7: Install new **60% seats** in the same way the old ones were removed. Note, the 40% seats can be reused. There is no need for new ones

Step 8: Attach the new **middle seat belt mounting bracket** onto the **left rear center seatbelt buckle**:



Step 9: Install the **new seat bench assembly** and clip both U-brackets onto the white clips. Then pull all three rear seatbelt buckles through the new seat bench assembly.



Step 10: Reinstall the retaining bolt to attach the seat bench assembly to the frame

Conclusion: Check to make sure everything is securely fastened. Total install time 1 hour. Enjoy new 3-person rear seating. Install car seats as desired, if applicable.



There are the A-spec 60% seats with an armrest if you prefer this version. The parts I bought does not have this armrest.



OEM Part numbers and links: You **DO NOT** need all of these parts. Only pick the parts that are missing.

PAD, R. RR. SEAT-BACK

Part Number: 82127-3S5-A01
MSRP Price: \$102.28

<https://www.acurapartsworld.com/oem-parts/acura-pad-r-rear-821273s5a01?c=az0x> \$83

<https://www.myacuraparts.com/oem-parts/acura-pad-r-rear-821273s5a01?c=az0x>

\$73

PAD, RR. SEAT CUSHION

Part Number: 82137-3S5-A01
MSRP Price: \$331.09

<https://www.acurapartswarehouse.com/oem/acura~0~82137-3s5-a01.html> \$231.82

<https://www.myacuraparts.com/oem-parts/acura-pad-rear-821373s5a01>

PAD, L. RR. SEAT-BACK

Part Number: 82527-3S5-A11
MSRP Price: \$117.83

<https://www.acurapartsforless.com/oem-parts/acura-pad-l-rear-825273s5a11> \$84.13

<https://www.acurapartswarehouse.com/oem/acura~0~82527-3s5-a01.html> \$90.32

GUIDE, RR. CENTER SEAT BELT WEBBING *NH900L*(NEUTRAL BLACK)

Part Number: 82913-TGG-A32ZA
MSRP Price: \$46.13

<https://www.hondapartsnow.com/genuine/honda~0~82913-tgg-a32za.html> #32.66

<https://www.hondafactoryparts.com/oem-parts/honda-guide-rear-center-seat-belt-webbing-nh900l-deep-black-82913tgg-a32za>

A-spec VIN example

- 4.COVER, RR. SEAT CUSHION TRIM *R188L* (LEA)(MADDER RED)

Part Number: 82131-3S5-A01ZB

Dealer Price : \$313.29

- 3.PAD, R. RR. SEAT-BACK

Part Number: 82127-3S5-A01

Dealer Price : \$107.39

- 6.PAD, RR. SEAT CUSHION

Part Number: 82137-3S5-A01

Dealer Price : \$347.64

- 8.ARMREST ASSY., RR. SEAT CENTER*R188L*(MADDER RED)

Part Number: 82180-3S5-A11ZB

Dealer Price : \$139.89

- 14.PAD, L. RR. SEAT-BACK

Part Number: 82527-3S5-A11

Dealer Price : \$123.72

- 16.GUIDE, RR. CENTER SEAT BELT WEBBING *NH900L*(NEUTRAL BLACK)

Part Number: 82913-TGG-A32ZA

Dealer Price : \$48.44

- 2.TRIM COVER R *R188L*

Part Number: 82121-3S5-A01ZB

Dealer Price : \$142.31

- 13.TRIM COVER L *R188L*

Part Number: 82521-3S5-A11ZB

Dealer Price : \$256.34

- 7.GARNISH, R. RR. SEAT LOCK *NH900L*(NEUTRAL BLACK)

Part Number: 82228-TM8-A01ZR

Dealer Price : \$9.40