

2023 Acura Integra L4-1.5L Turbo (L15CA)

Vehicle > Accessories and Optional Equipment > Relays and Modules - Accessories and Optional Equipment > Collision Avoidance Module > Testing and Inspection > Programming and Relearning

RESETTING THE PARKING AND BACK-UP SENSOR CONTROL UNIT

Resetting the Parking and Back-Up Sensor Control Unit

Procedure

How to use this manual.

Reset the parking and back-up sensor unit after doing any of the following actions:

- When you replace the parking and back-up sensor.
- When you change the parking and back-up sensor mounting location from the original location.

NOTE: When you replace with a new parking and back-up sensor control unit, it is not necessary to perform a reset of the control unit.

1. Parking and Back-Up Sensor Control Unit - Reset

■ Procedure

1. Turn the vehicle to the ON mode.
2. Operate the right multi-function steering wheel controller, then select the following menu icons on the gauge control module screen in sequence to parking and back-up sensor system OFF.
 - Safety support
 - Parking sensor system
3. Turn the vehicle to the OFF(LOCK) mode.
4. Turn the vehicle to the ON mode.
5. Operate the right multi-function steering wheel controller, then select the following menu icons on the gauge control module screen in sequence to switch the parking and back-up sensor system ON within 10 seconds after the step 4.
 - Safety support

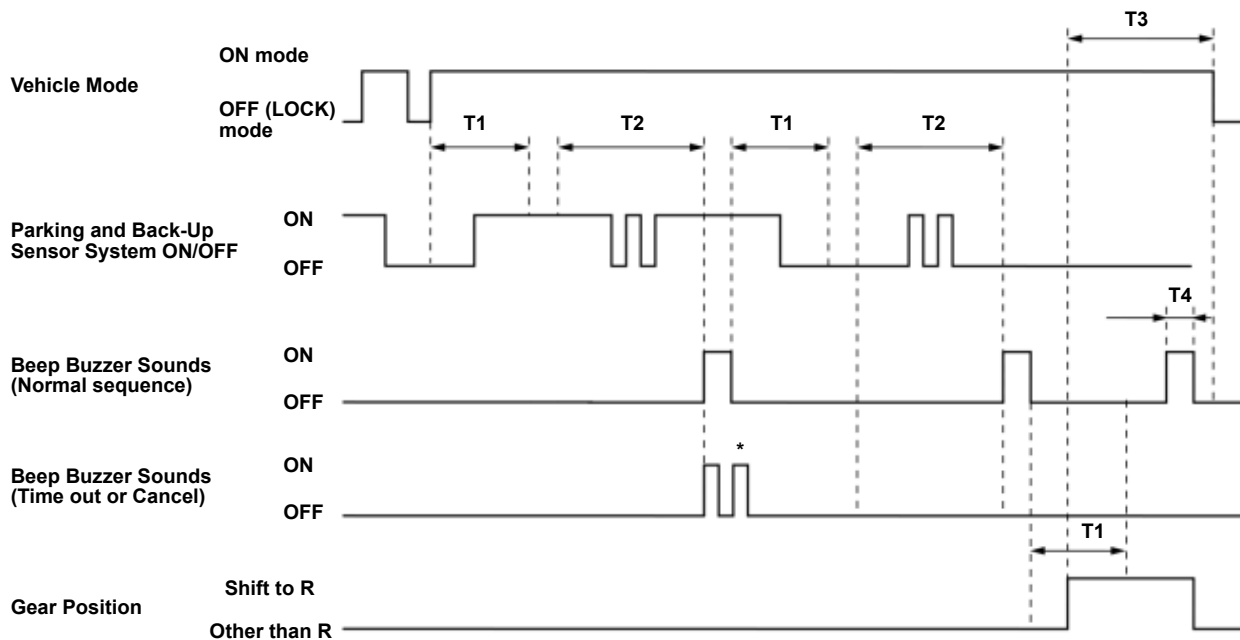
- Parking sensor system

- Switch the parking and back-up sensor system ON/OFF 4 times within 15 seconds after the step 5.
- Switch the parking and back-up sensor system ON/OFF once within 10 seconds after the beep.
- Switch the parking and back-up sensor system ON/OFF 4 times within 15 seconds after the step 7.
- Shift to the R position/mode within 10 seconds after the beep.
- Shift to the P or N position/mode after a 2 second long beep in the R position/mode.

NOTICE

Do not turn the vehicle to the OFF(LOCK) mode for 16 seconds after shifting to the R position/mode.

NOTE: If you hear two short beeps (500ms), do the resetting procedure again from the beginning.



T1 = Within 10 seconds
 T2 = Within 15 seconds
 T3 = 16 seconds
 T4 = 2 seconds
 *: 500 ms ON, 500 ms OFF 2cycles

■ After Registration

- Switch the parking and back-up sensor system ON, confirm that the parking and back-up sensor system operates properly.